



Client \_\_\_\_\_ Quantity \_\_\_\_\_  
 Project \_\_\_\_\_ Position \_\_\_\_\_

## Roll-in Levtronic J12

**Model:** J120/1FH

**Cod:** J31120800101

### Technical data

<b>Max capacity:</b>	1 trolley GN1/1, EN60x40
<b>Gross capacity:</b>	977 lt
<b>Temperature range:</b>	-6°+40°C
<b>Humidity range:</b>	45% - 95% with humidifier
<b>Refrigerant unit:</b>	Plug-In
<b>Climate class:</b>	5
<b>Cooling gas:</b>	R452A
<b>Defrost:</b>	Electric
<b>Valve:</b>	Supplied standard with solenoid
<b>Dimensions:</b>	810×1015×2115 mm
<b>Packing dimensions:</b>	830×1050×2360 mm
<b>Gross weight:</b>	180 Kg
<b>Voltage:</b>	220-240 V - 50 Hz
<b>Total rate:</b>	1360 W
<b>Absorbed Current:</b>	6,2 A
<b>Cooling capacity:</b>	668 W*
<b>*:</b>	Evap. -10°C Cond. +55°C

### Features

<b>Standard equipment:</b>	LED lighting, lock with key
<b>Control:</b>	4,3" touch screen display with USB port
<b>Doors:</b>	1 door, self-closing, reversible with 105° stop
<b>Door gasket:</b>	Magnetic, triple chamber and easily replaceable
<b>Insulation:</b>	100 mm thickness - CFC/HCFC free
<b>Exterior/interior finishing:</b>	One-piece structure in AISI 304 stainless steel. Back in galvanized steel
<b>Inner corners:</b>	Rounded for easy cleaning and ensuring maximum hygiene
<b>Handle:</b>	Snap-in chrome with integrated lock
<b>Cosmo:</b>	Wi-Fi remote control system

**Accessories and variants**

Power supply frequency 60Hz

Other special voltage

Purity C Quell ST 50 filter cartridge

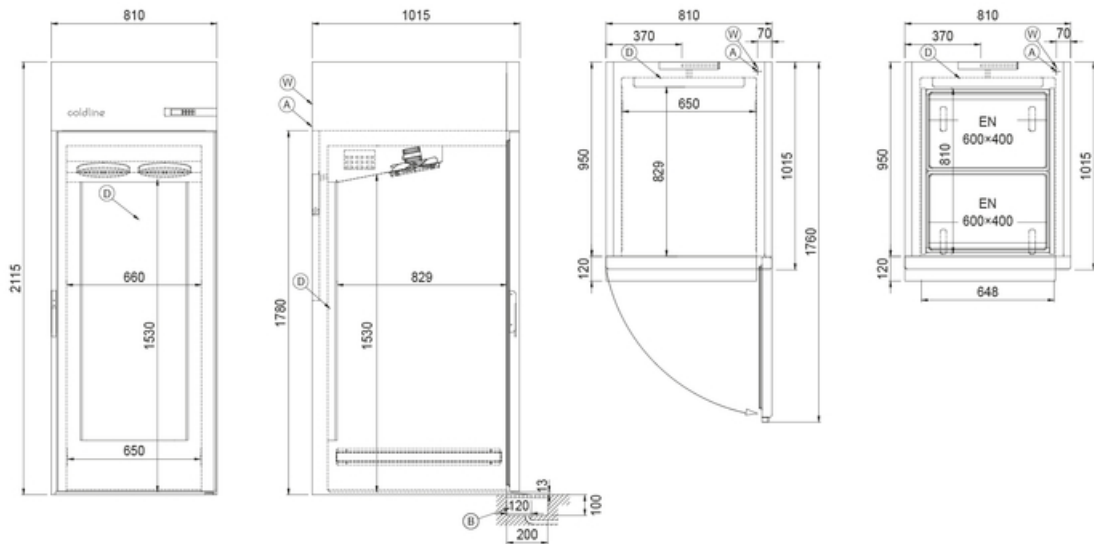
Cosmo connection kit

**COSMO - wi-fi control**

Cosmo is the wi-fi technology that allow to connect and monitor all Coldline appliances. Connect Pass-Through cabinets to a Cosmo hub (MODI, VISION or LEVTRONIC) and from the app you can check the operating conditions of each machine and receive alerts in case of abnormal functioning.

\*The installation requires a kit for the replacement of the racks

**Technical draw**



**A:** Power supply cable outlet

**B:** Condensation water drain

**D:** Airflow conveyor

**J:** Automatic evaporation of condensing water

**W:** Water mains connection for humidifier - 3/4" female. Unloading not required

In order to constantly offer the best possible products we reserve the right to make changes on technical specifications without incurring any obligation for equipment previously or subsequently sold.